



**PASS 26**  
ENGINEERING & DESIGN

## Tidy, Precise and with Quality

We offer outsourcing services, specialized in architecture, structural and civil engineering, from BIM modeling to complete project design. We're committed to maintain high standards and strive our projects to be with utmost quality.

**Successfully finished over 70 Project**

Web: [www.pass26.com](http://www.pass26.com)

E-mail: [info@pass26.com](mailto:info@pass26.com)



**PASS 26**  
ENGINEERING & DESIGN

## Our Services

Our areas of expertise include implementation of BIM processes and standards throughout project life cycle. BIM Training, BIM Content Creation, BIM Modeling, Coordination, Fabrication, Rendering and Facility Management.

### **No-Risk Trial**

We offer a trial period to decide whether our services meet your needs. If you don't find them a match, you will not be charged (and you can even keep any work completed during the trial).



**AUTODESK**

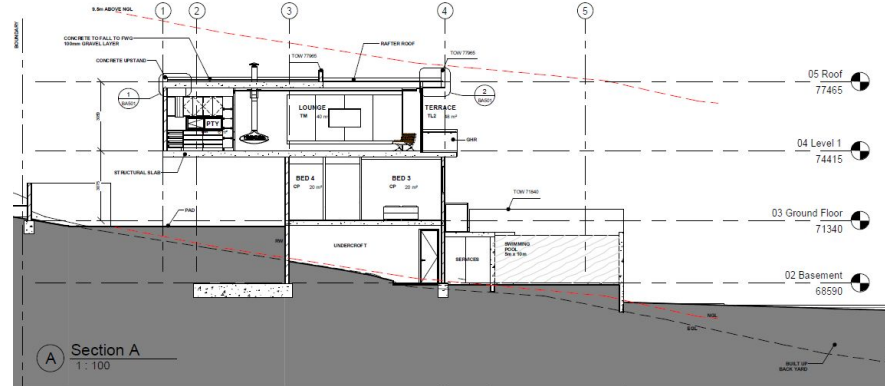
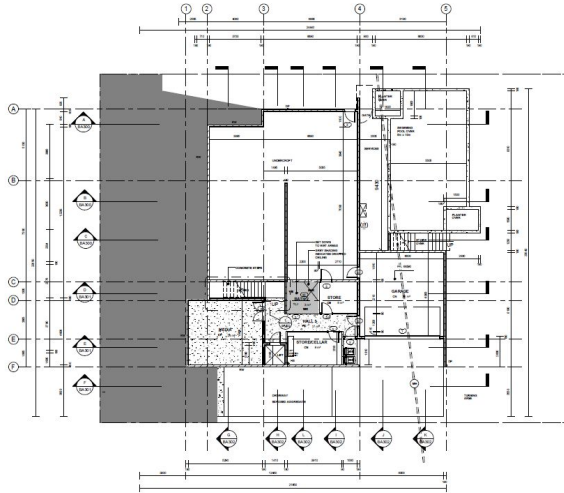


# Architectural Design Projects

## Residential Buildings

Generating 3D Architectural and Structural models, preparation of 2D Architectural and Structural plans, high quality renders, drawings, detailing solutions and generating complete project documentations and material takeoffs.

**Software:** Revit, Lumion

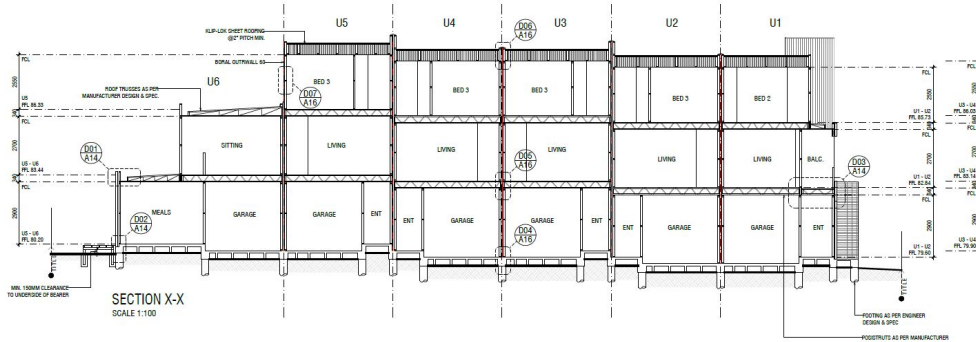
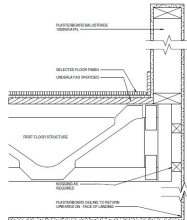
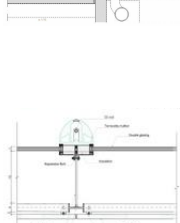
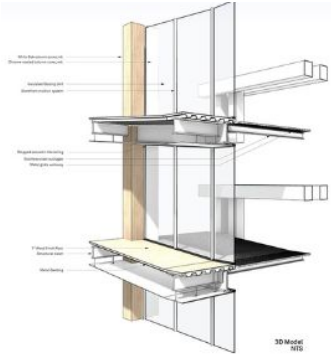
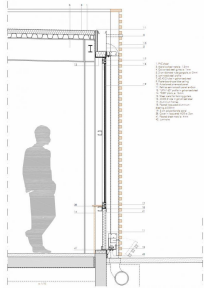


# Architectural Design Projects

## Residential Buildings

Generating 3D Structural and Architectural models, preparation of 2D plans, ..... high quality detail drawings, and generating complete project documentations and material takeoffs.

**Software:** Revit, AutoCAD, Lumion

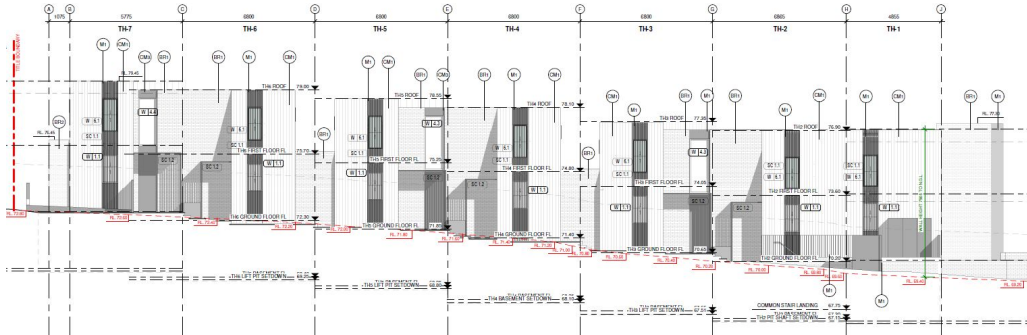
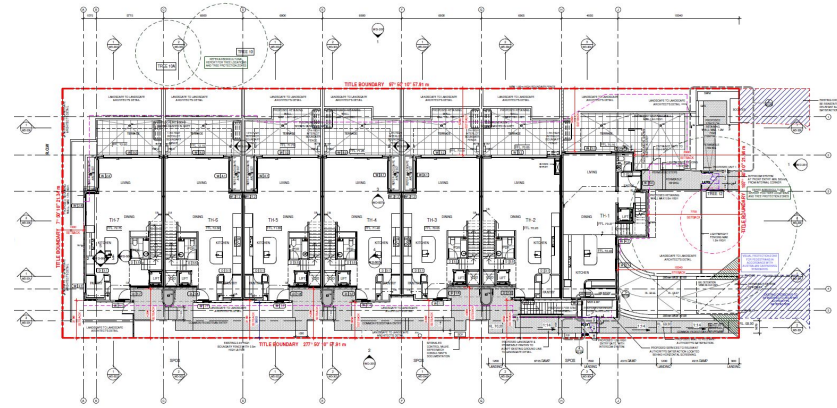


# BIM Project Support

## BIM Models and Detailing

Generating 3D Architectural and Structural models, preparation of 2D Architectural and Structural plans, high quality renders, drawings, detailing solutions and generating complete project documentations and material takeoffs.

**Software:** Revit, Lumion

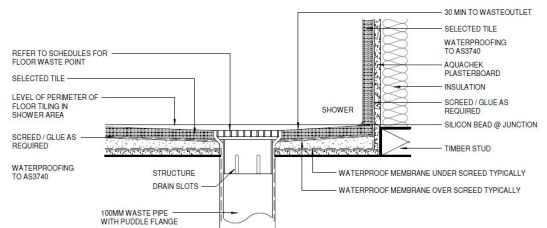
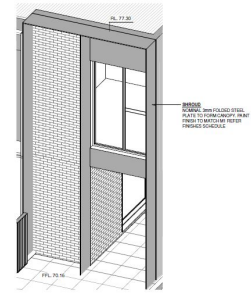
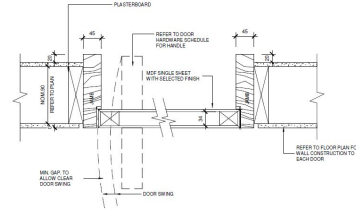
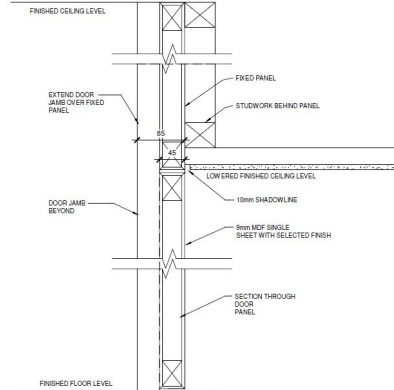
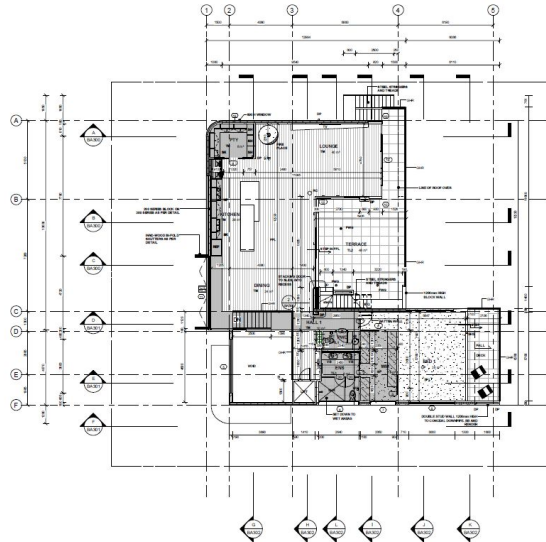


# BIM Project Support

## BIM Models and Detailing

Generating 3D Structural and Architectural models, preparation of 2D plans, high quality detail drawings, and generating complete project documentations and material takeoffs.

**Software:** Revit





[CLICK TO SEE OUR  
RENDERING PORTFOLIO](#)

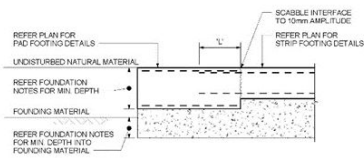
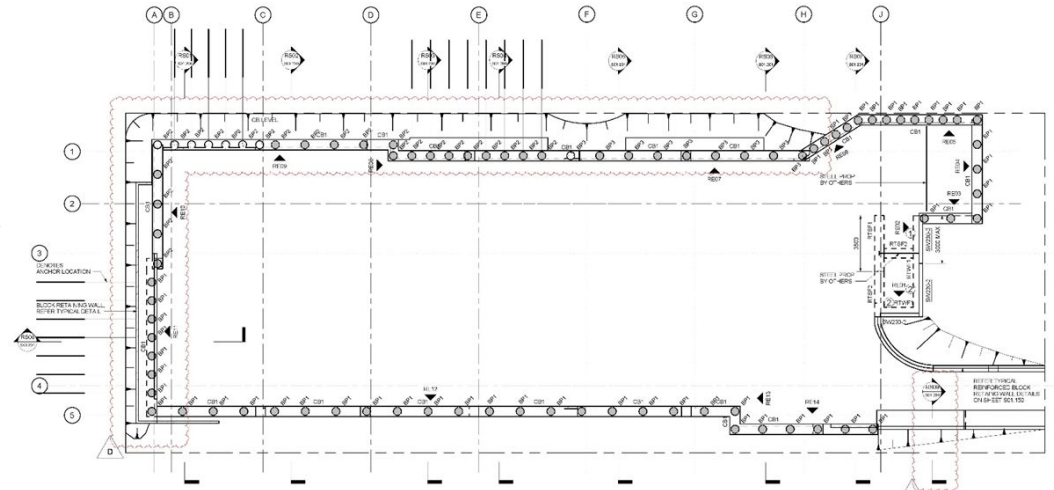


# Structural Design Projects

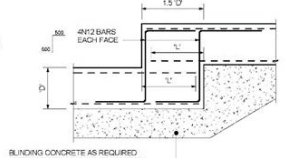
## Design and Detailing

Structural calculations and detailing of timber, steel and concrete Structural Systems, from residential extensions to high Rise Building Systems

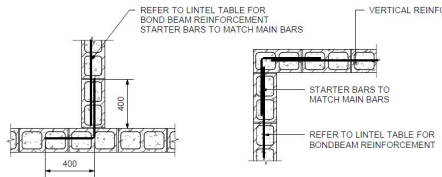
**Software:** Revit, Structural Analysis software



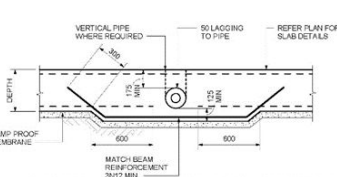
**TYPICAL STRIP FOOTING TO PAD FOOTING CONNECTION DETAIL**



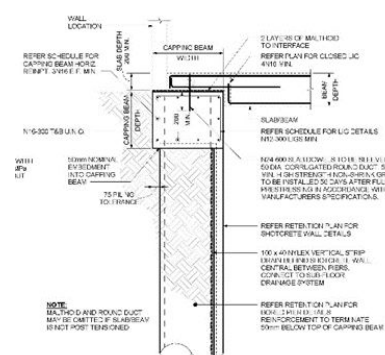
**TYPICAL STRIP FOOTING/GROUND BEAM STEP DETAIL**



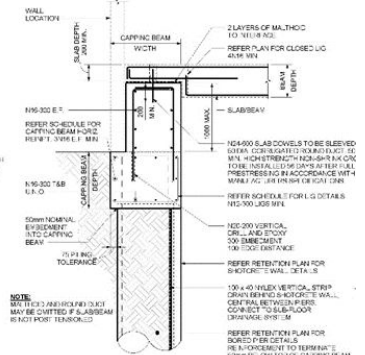
**TYPICAL BOND BEAM INTERSECTION - PLAN DETAIL**



**TYPICAL SERVICES PENETRATION THROUGH BEAM DETAIL**



**TYPICAL BORED PIER TO CAPPING BEAM DETAIL WITH WALL OVER (FRONT FACE)**



**TYPICAL BORED PIER TO CAPPING BEAM DETAIL WITH WALL OVER AND UPSTAND (FRONT FACE)**

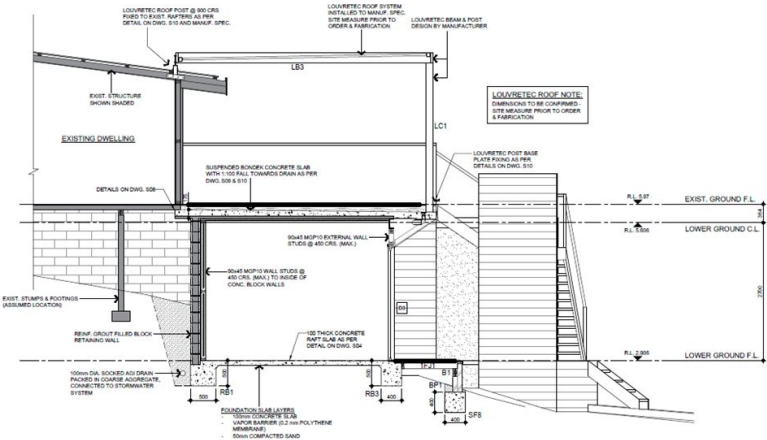
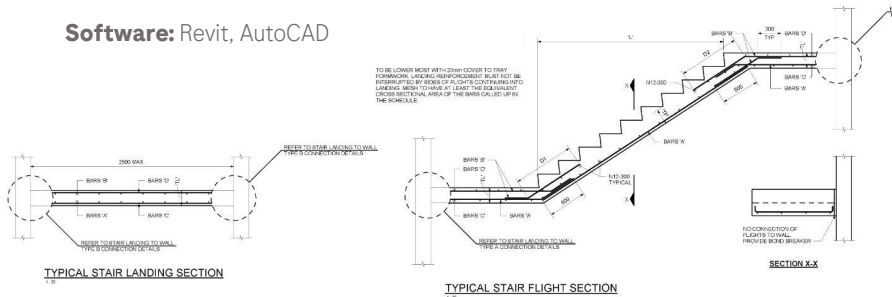


# Structural Design Projects

## Design and Detailing

Structural calculations and detailing of timber, steel and concrete Structural Systems, from residential extensions to high Rise Building Systems

**Software:** Revit, AutoCAD

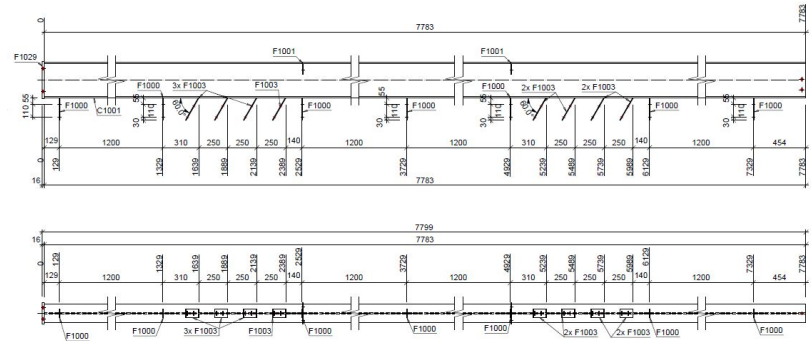
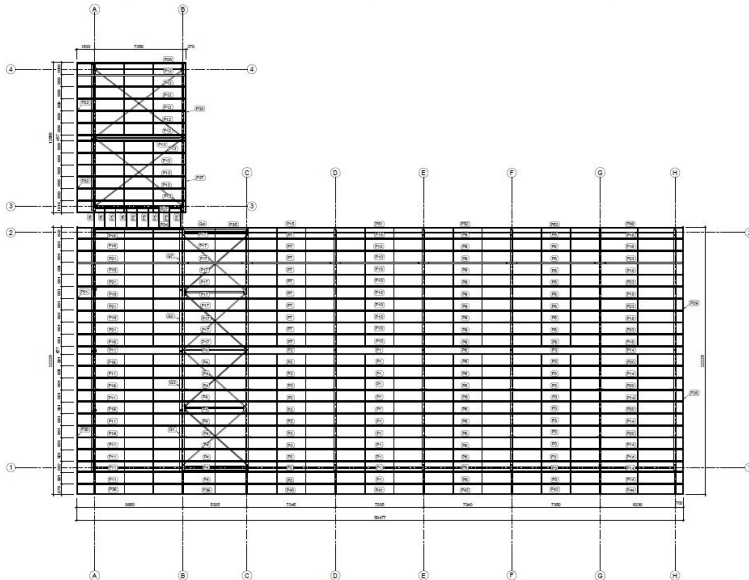
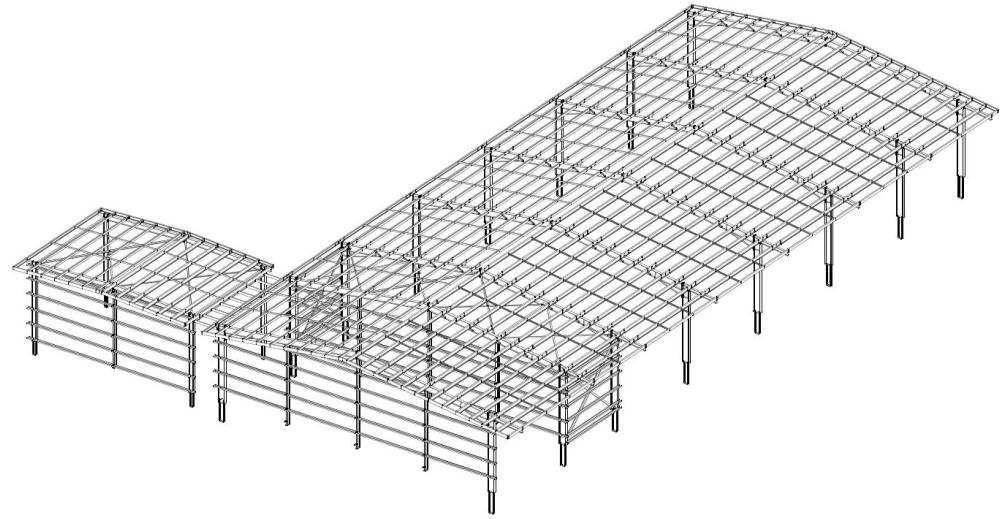


# Structural Design Projects

## Steel Structural Detailing

Generating 3d Structural models for structural detailing and clash detections, preparation of detailed plans, drawings and generating complete project documentations and material takeoffs.

**Software:** Advance Steel, Tekla

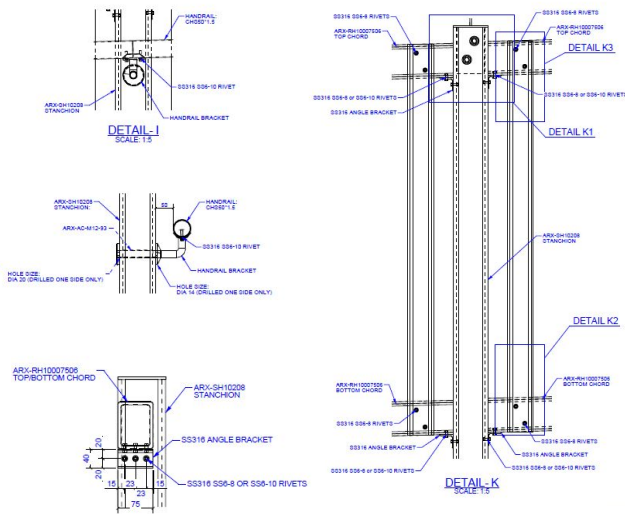
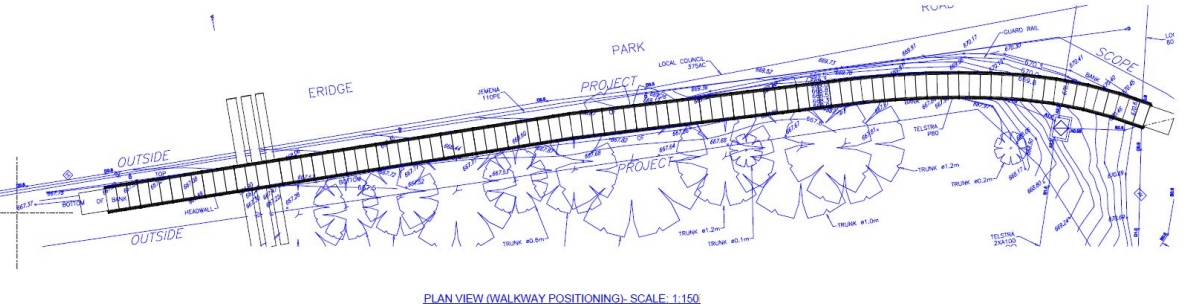
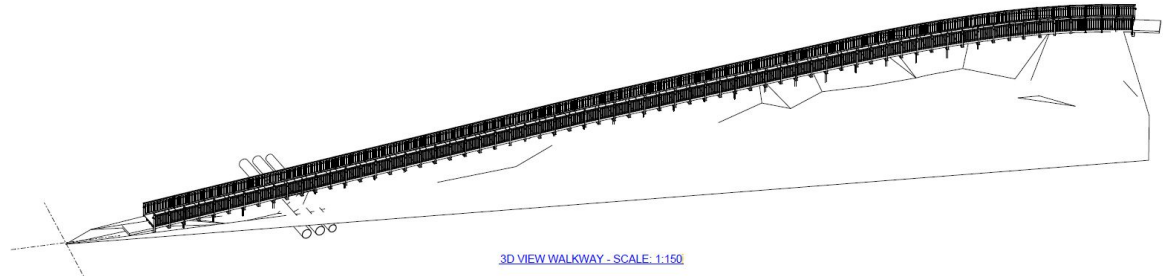
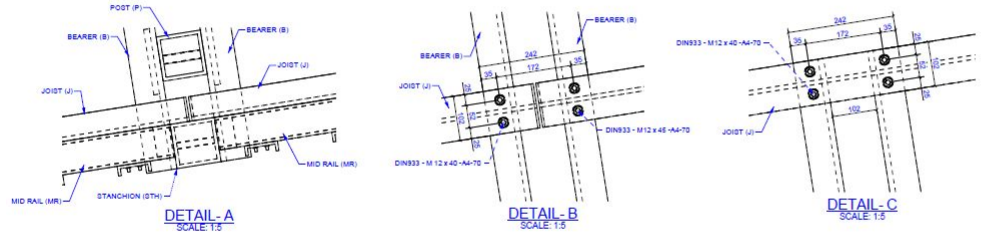


# Structural Design Projects

## Steel Structural Detailing

Generating 3d Structural models for structural detailing and clash detections, preparation of detailed plans, drawings and generating complete project documentations and material takeoffs.

**Software:** Advance Steel, Tekla

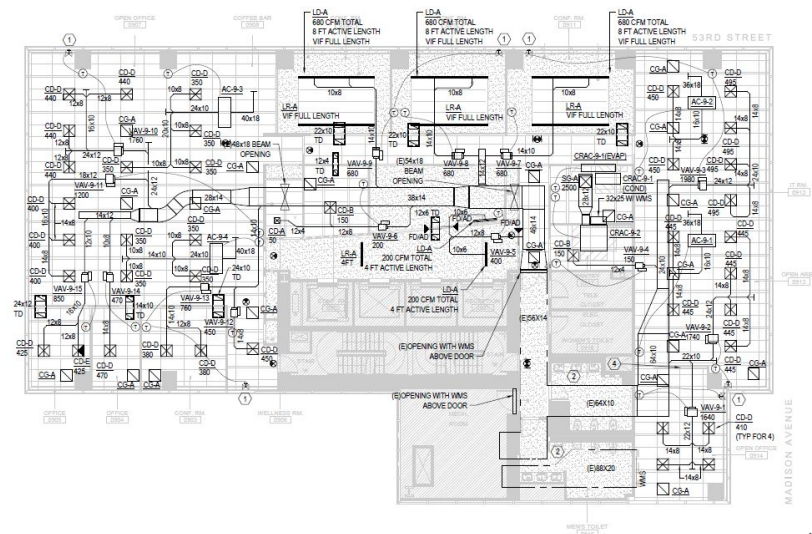
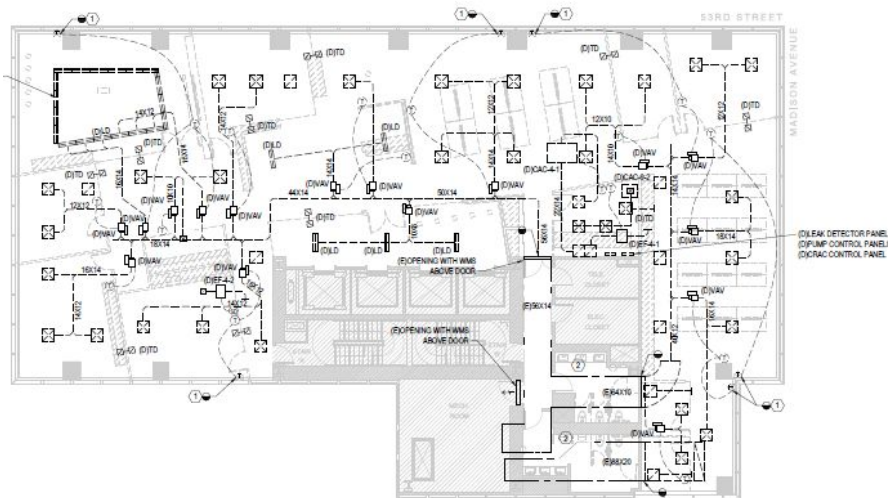
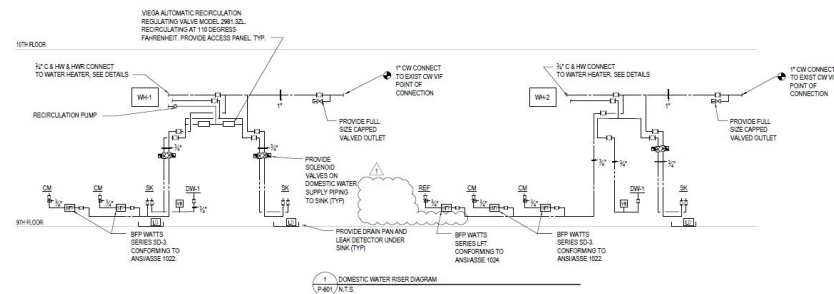


# MEP Projects

## MEP Modeling and Detailing

Generating MEP models for clash detections, preparation of detailed plans, drawings and other documentation like bill of quantities and material take offs.

**Software:** Revit, AutoCAD

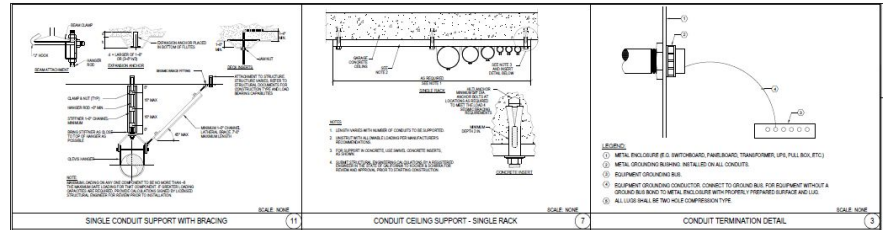
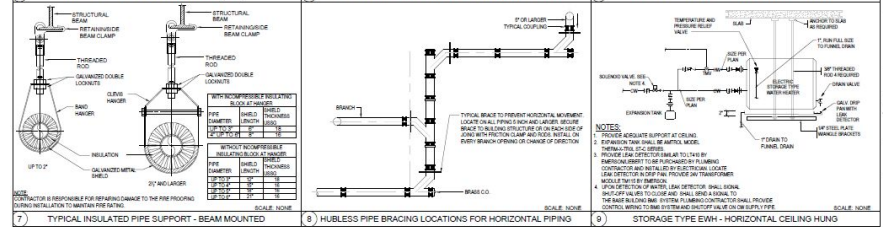
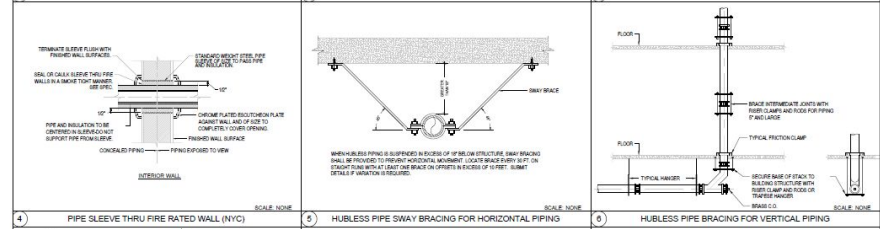
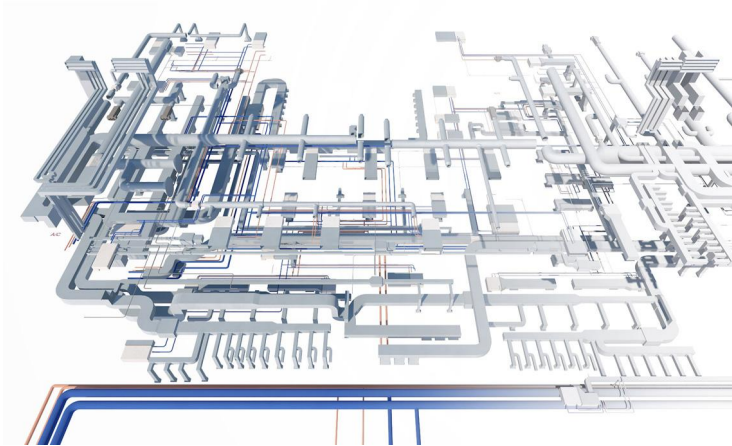


# MEP Projects

## MEP Modeling and Detailing

Generating MEP models for clash detections, preparation of detailed plans, drawings and other documentation like bill of quantities and material take offs.

**Software:** Revit, AutoCAD





**PASS 26**  
ENGINEERING & DESIGN

## Our Team

Our team is defined by its unusual mix of people, that contribute to the company values in their own and original way. Our team is defined by Engineers, Architects and Technicians all committed to their profession, a team that enjoys its work and dreams of creating. Our goal is to design places that make a positive difference in the world. That's why people are at the heart of everything we do. We work as a team, we exchange knowledge, solve problems together and most importantly we create together!



[www.pass26.com](http://www.pass26.com)



[info@pass26.com](mailto:info@pass26.com)